



FIAT

DIVISIONE AVIAZIONE
CORSO G. AGNELLI 200 - TURIN (ITALY)

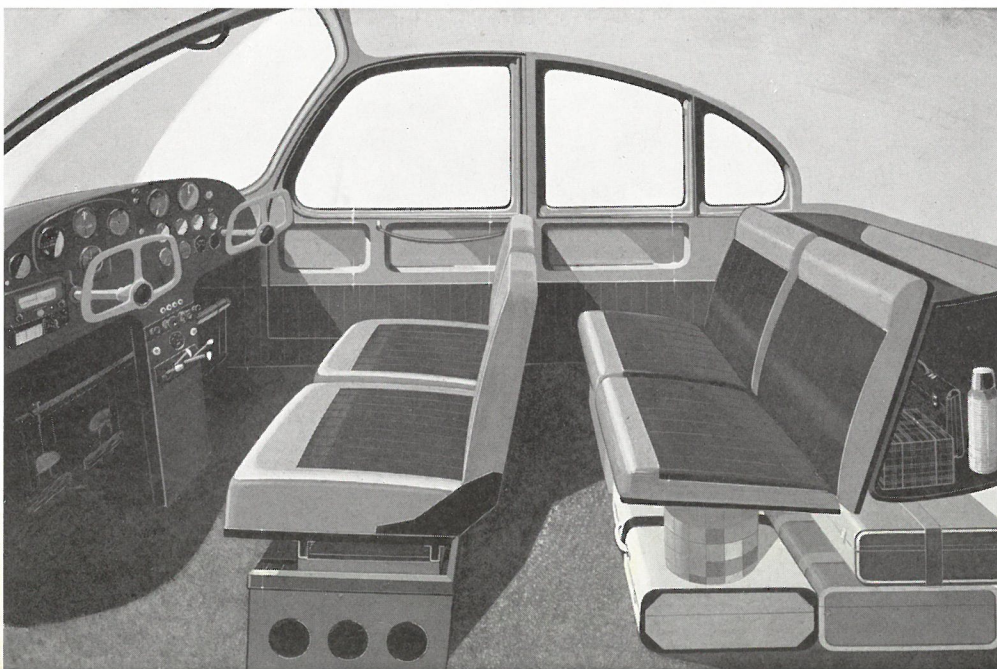
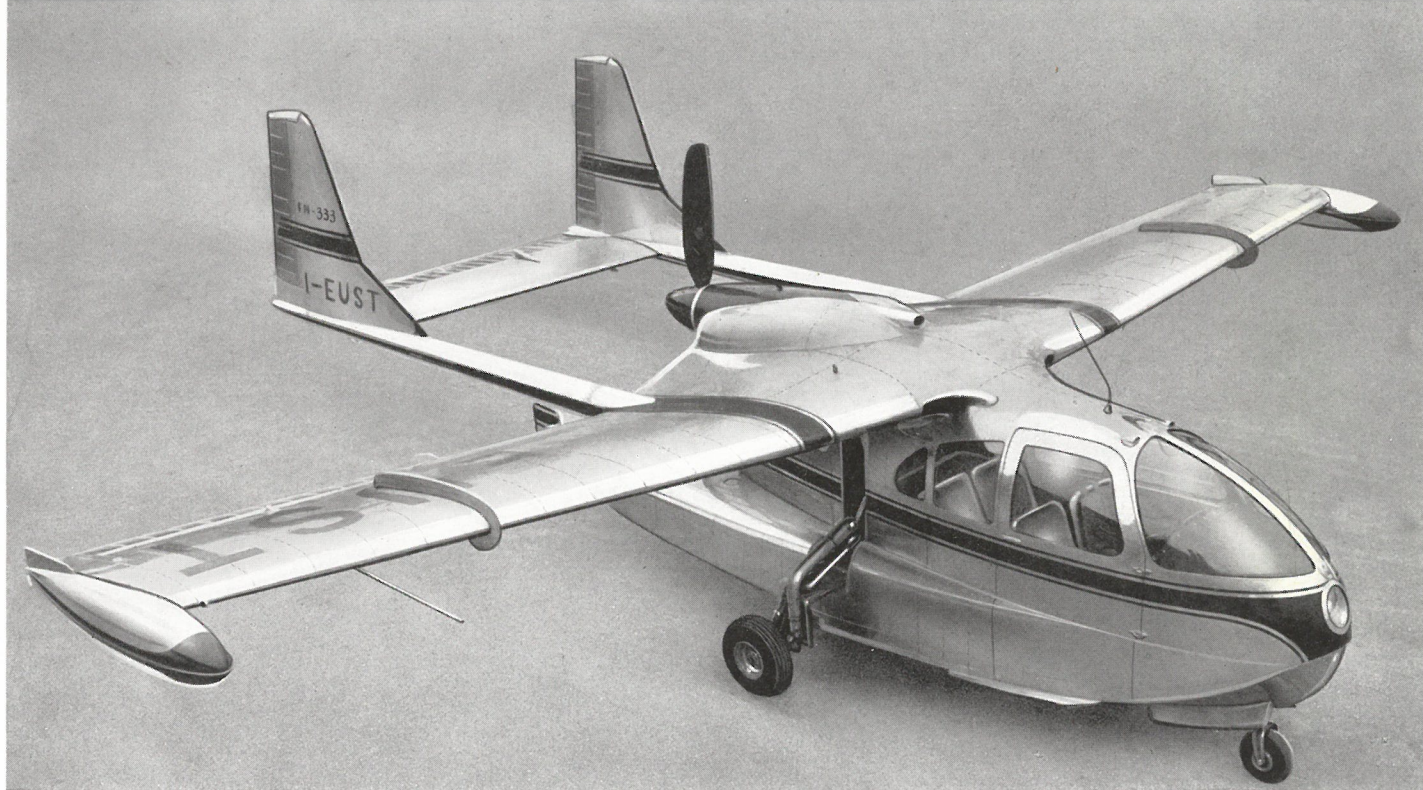
FN 333

The FN. 333 aeroplane is a four-seater, dual control, all-metal amphibious aircraft. Its structural design is simple and practical and makes the aeroplane particularly suited to many different uses, especially in the field of light civilian air transport.

Easy of access and highly manoeuvrable on both land (steerable front wheel) and on water (efficient rudder), it possesses excellent flight characteristics and is particularly easy to pilot. It needs no specially prepared landing strips; any small meadow or sheet of water is sufficient for its use. Thanks to the high wing and wide-opening door, up to 180°, it can easily approach, on water, quays and boats for easy transshipments.

This aeroplane has a remarkable load capacity: comfortable accommodation for four persons and a luggage space sufficiently roomy for a good number of medium sized packages.

Its flight characteristics and performance are excellent in comparison with other aircraft of the same class.

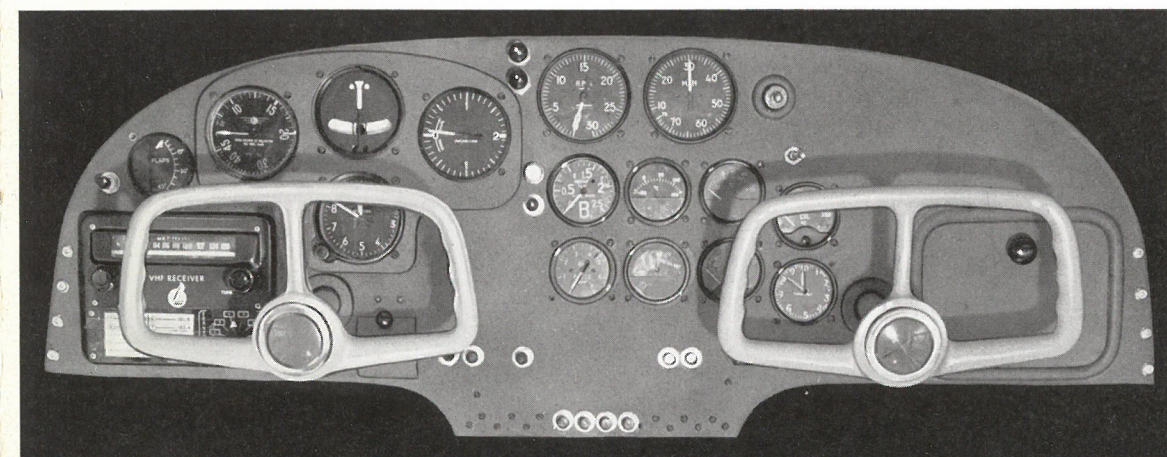
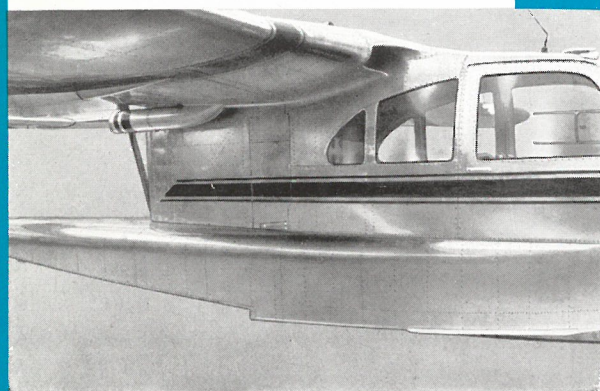
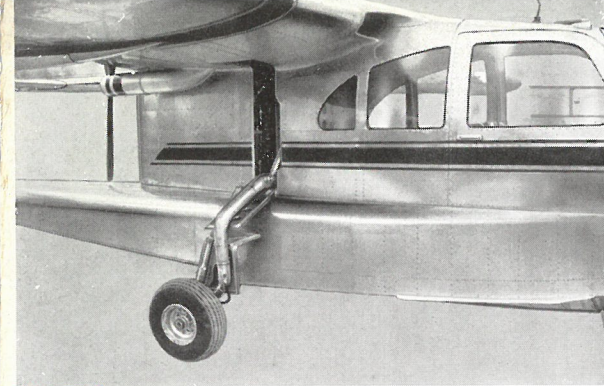


Formula: *amphibious, dual-control, high wing monoplane, central fuselage, tail unit carried on spars connected to the wing.*

Construction: *all-metal.*

Power unit: *« Continental » engine of 240 h.p., constant speed pusher propeller of the Hartzell type.*

Cabin: *four-seater with luggage space, situated forward of the wing so as to afford ample visibility.*



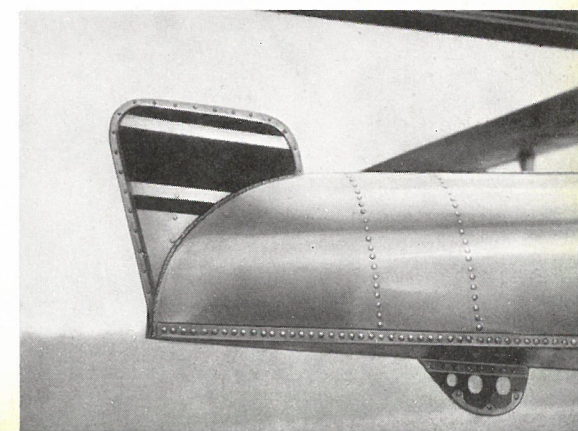
Undercarriage: *retractable tricycle, with steerable front wheel.*

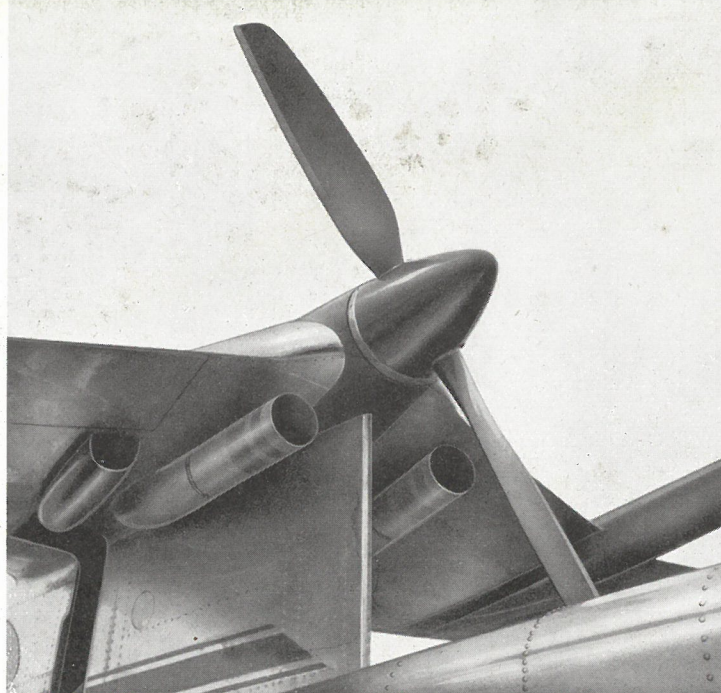
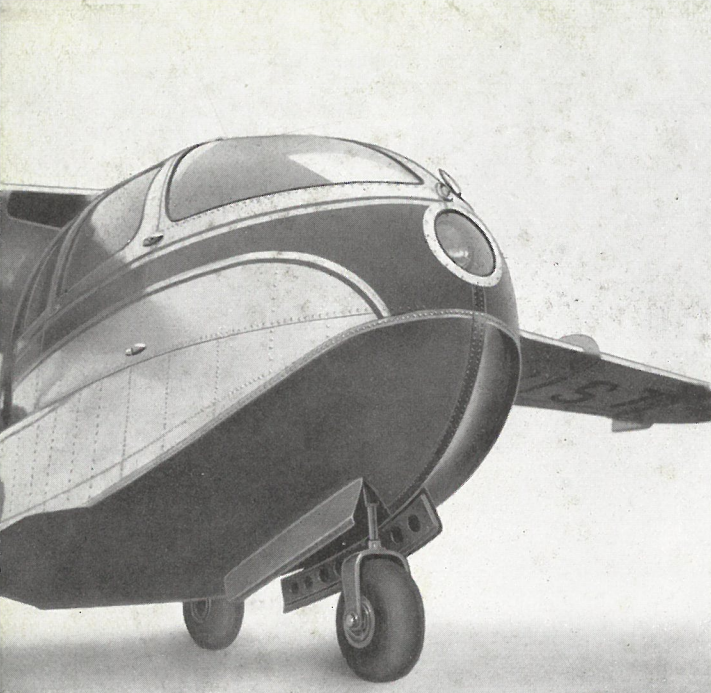
Lateral floats and water rudder: *retractable.*

Instruments *suitable for blind flying.*

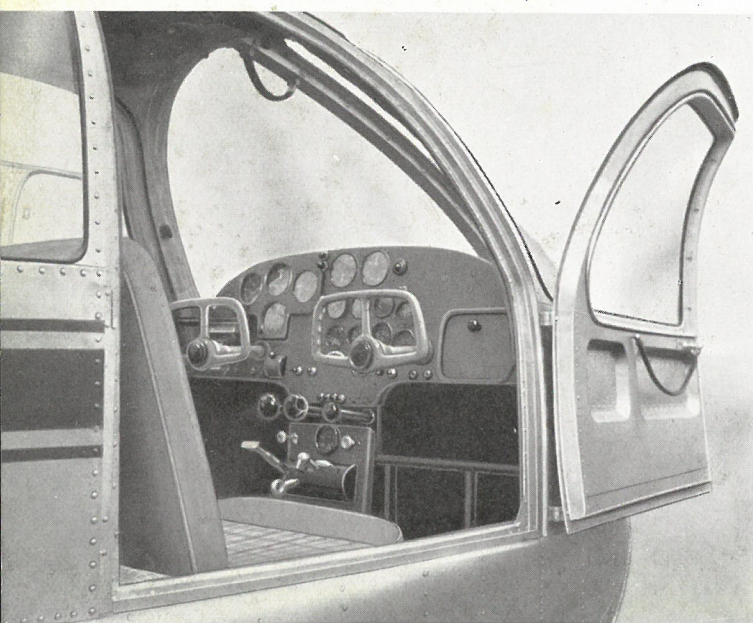
Radio: *VHF transmitter and receiver.*

Wheel brakes: *hydraulic, pedal operated.*





Technical data



Wing span	34' 0"
Length	23' 11 1/2"
Height from ground....	10' 6"
Empty weight,	1962 lbs
Useful load	1014 lbs
Gross weight, fully laden	2975 lbs
Wing area	163 sq. ft.
Wing loading	18 lbs/sq. ft.
Load per h.p.....	12.4 lbs
Normal fuel load.....	33 Imp. galls.
Extra fuel	13 Imp. galls.
Luggage space	15 cub. ft.
Undercarriage track	6' 2"

Maximum speed	180 m.p.h.
Cruising speed at 8000 feet	165 m.p.h.
Min. speed at full load with flaps	65 m.p.h.
Practical ceiling	20,000 feet.
Normal range	560 miles
Maximum range	775 »
Climbing speed at s/l. ..	21.3 feet/sec.
Take-off run on land ...	300 yards
Take-off time, from land	14 secs.
Landing run	220 yards
Take-off run on water .	460 yards
Take-off time, from water	28 secs.