

**SIAI  
MARCHETTI**

S<sup>ESTO</sup> CALENDE (VARESE) ITALY  
TEL. 91421

**FN 333**

(LICENZA NARDI)

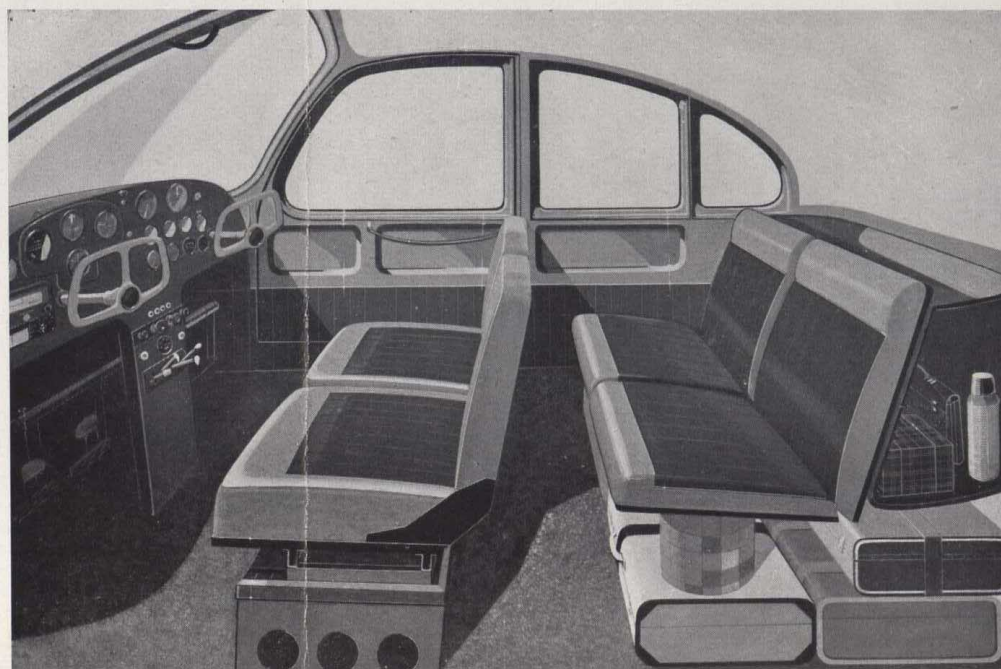
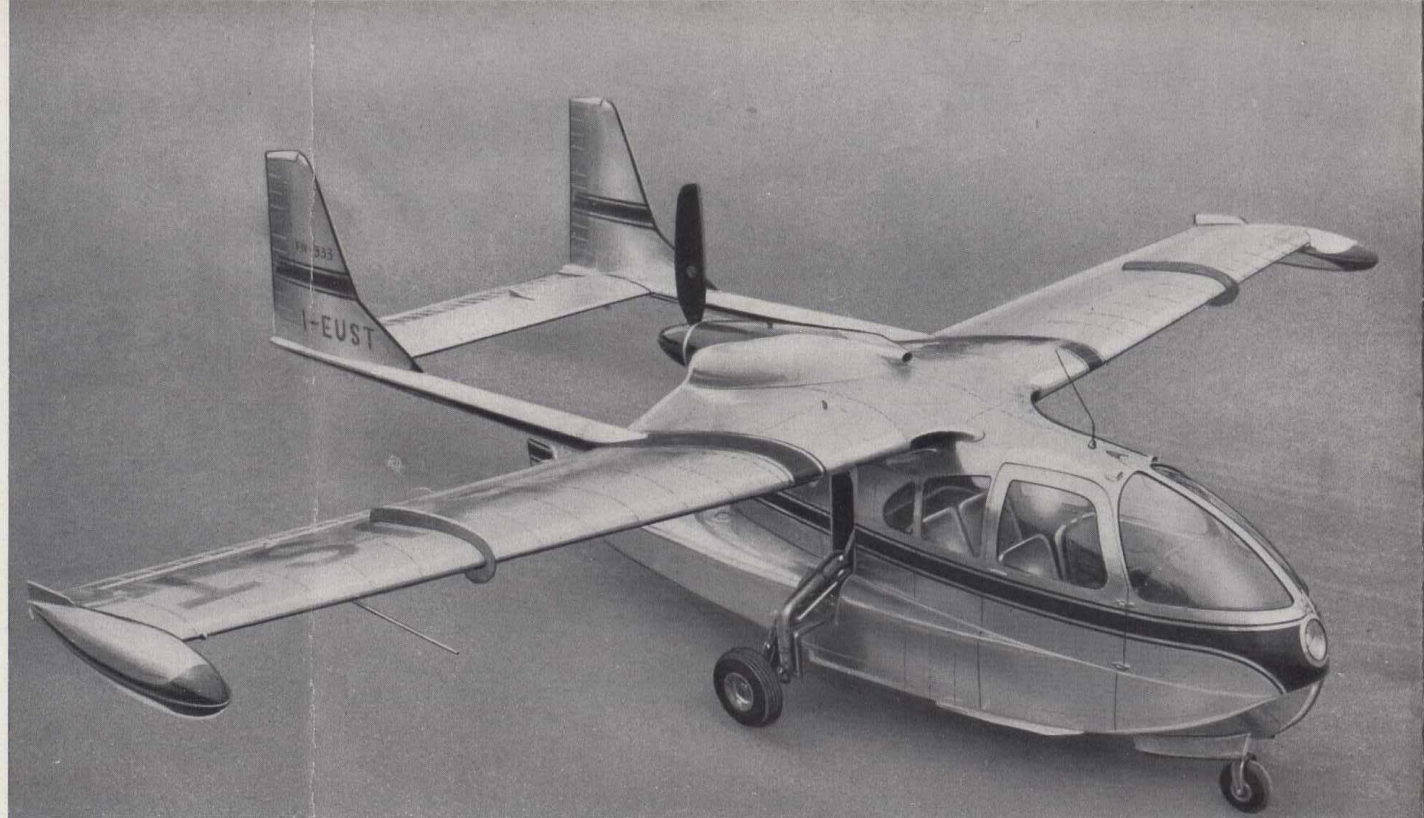


The FN. 333 aeroplane is a four-seater, dual control, all-metal amphibious aircraft. Its structural design is simple and practical and makes the aeroplane particularly suited to many different uses, especially in the field of light civilian air transport.

Easy of access and highly manoeuvrable on both land (steerable front wheel) and on water (efficient rudder), it possesses excellent flight characteristics and is particularly easy to pilot. It needs no specially prepared landing strips; any small meadow or sheet of water is sufficient for its use. Thanks to the high wing and wide-opening door, up to 180°, it can easily approach, on water, quays and boats for easy transhipments.

This aeroplane has a remarkable load capacity: comfortable accommodation for four persons and a luggage space sufficiently roomy for a good number of medium sized packages.

Its flight characteristics and performance are excellent in comparison with other aircraft of the same class.



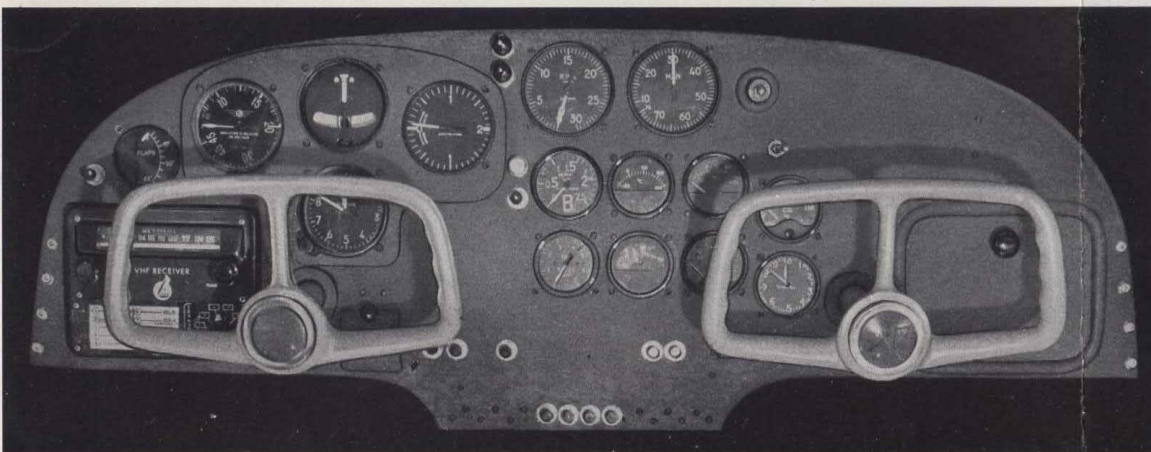
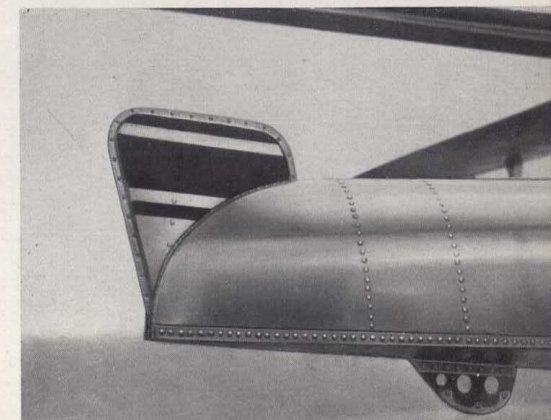
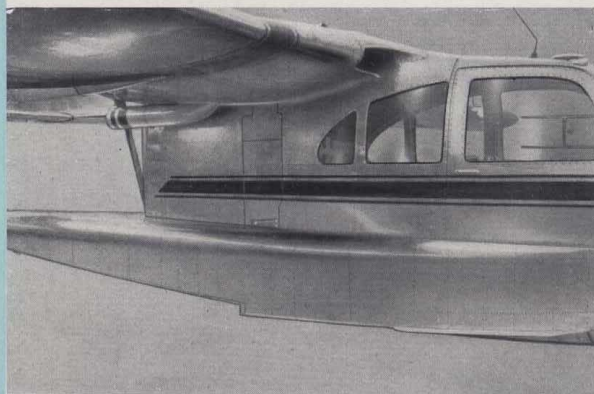
**Formula :** amphibious, dual-control, high wing mono-plane, central fuselage, tail unit carried on spars connected to the wing.

**Construction :** all-metal.

**Power unit :** « Continental » engine of 240 h.p., constant speed pusher propeller of the Hartzell type.

**Cabin :** four-seater with luggage space, situated forward of the wing so as to afford ample visibility.





**Undercarriage:** retractable tricycle, with steerable front wheel.

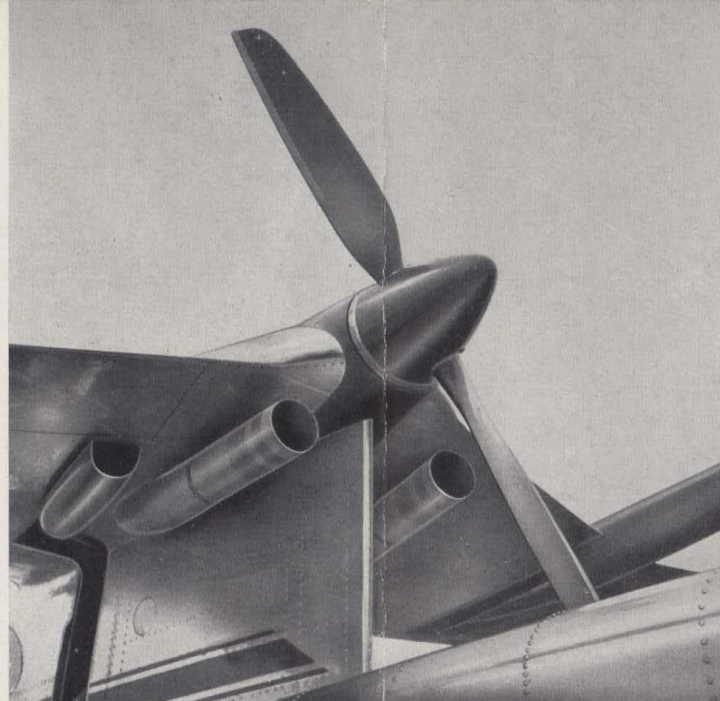
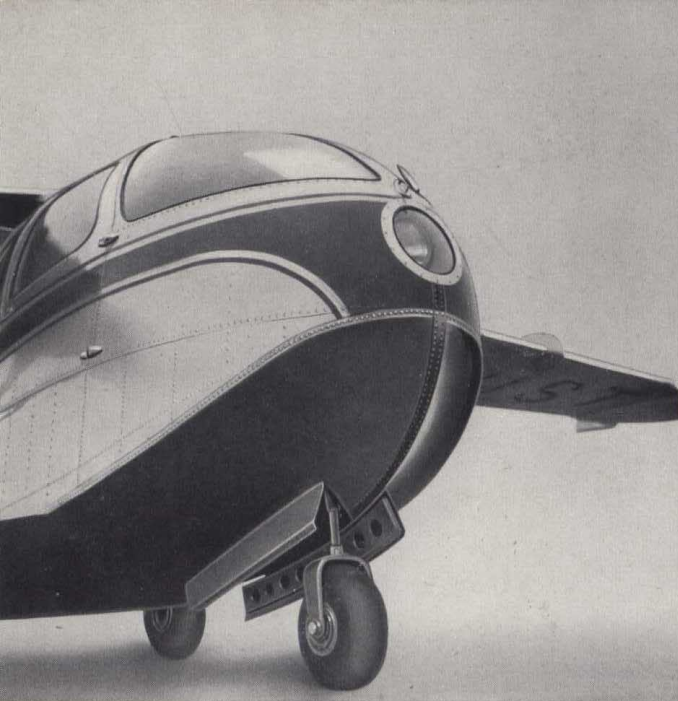
**Lateral floats and water rudder:** retractable.

**Instruments** suitable for blind flying.

**Radio:** VHF transmitter and receiver.

**Wheel brakes:** hydraulic, pedal operated.





## ***Tecnical data***



Wing span . . . . .	34'0"
Length . . . . .	23' 11½"
Height from ground . . .	10' 6"
Empty weight . . . . .	1962 lbs
Useful load . . . . .	1014 lbs
Gross weight, fully laden	2975 lbs
Wing area . . . . .	163 sq. ft.
Wing loading . . . . .	18 lbs/sq. ft.
Load per h.p. . . . .	12.4 lbs
Normal fuel load . . . .	33 Imp. galls.
Extra fuel . . . . .	13 Imp. galls.
Luggage space . . . . .	15 cub. ft.
Undercarriage track . . .	6' 2"

Maximum speed . . . . .	180 m.p.h.
Cruising speed at 8000 feet . . . . .	165 m.p.h.
Min. speed at full load with flaps . . . . .	65 m.p.h.
Practical ceiling . . . . .	20,000 feet.
Normal range . . . . .	560 miles
Maximum range . . . . .	775 »
Climbing speed at s/l. . .	21.3 feet/sec.
Take-off run on land . . .	300 yards
Take-off time, from land .	14 secs.
Landing run . . . . .	220 yards
Take-off run on water . .	460 yards
Take-off time, from water	28 secs.